

Select Vehicle | New TSBs | Technician's Reference | Collision Reference | Collision Request

Component Search:

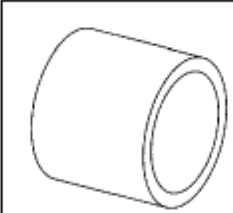
Information Charge | Conversion Calculator

2007 Ford Focus L4-2.0L VIN N

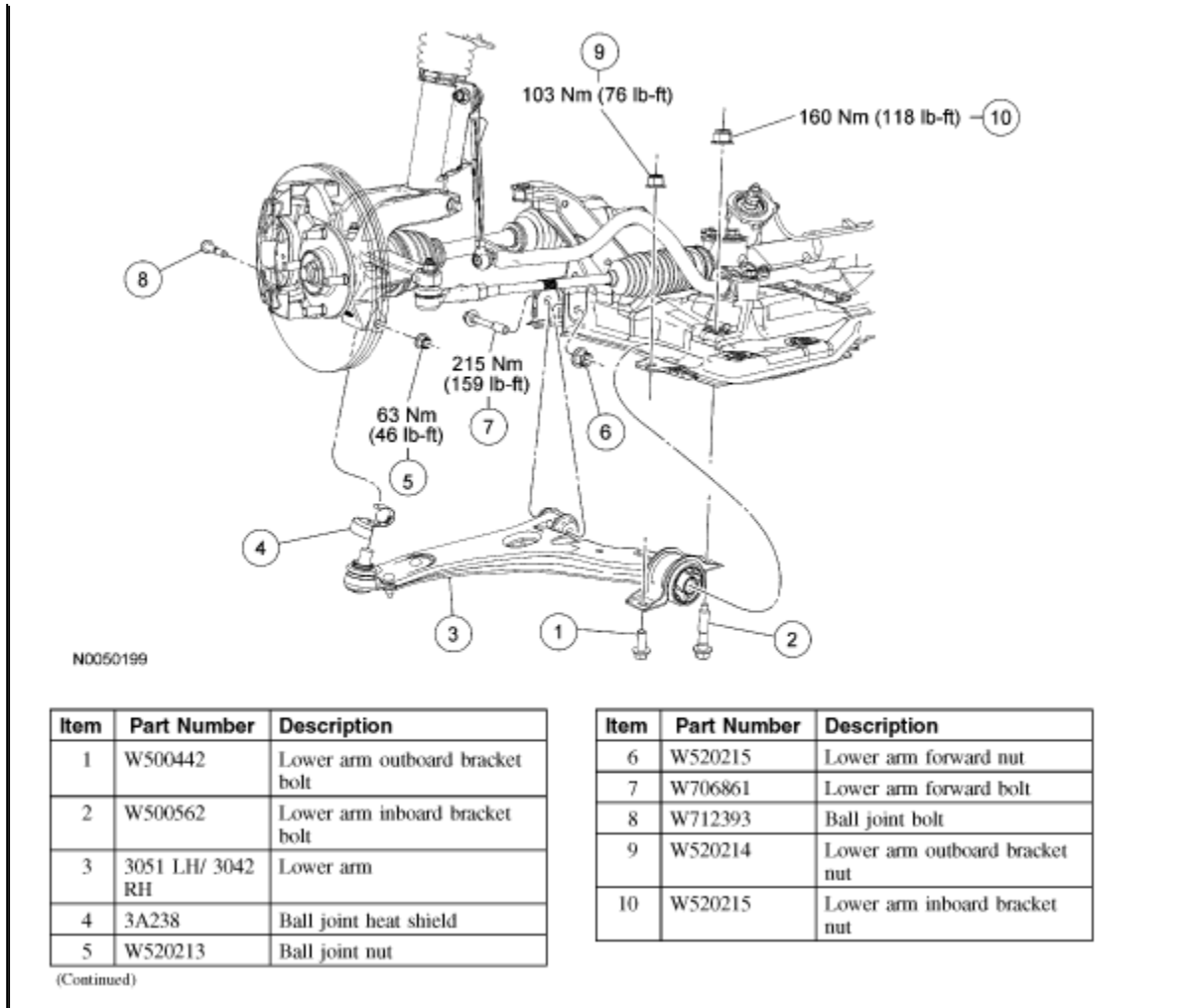
[Vehicle Level](#) → [Steering and Suspension](#) → [Suspension](#) → [Control Arm](#) → [Service and Repair](#) → [Front](#) ←

Front

Lower Arm

Special Tool(s)	
Special Tool(s)	
 <p>ST1233-A</p>	<p>Adapter 307-102 (T81P-70363-A4) Part of 307-S098 (T81P-77000-A)</p>





Zoom

Sized for Print

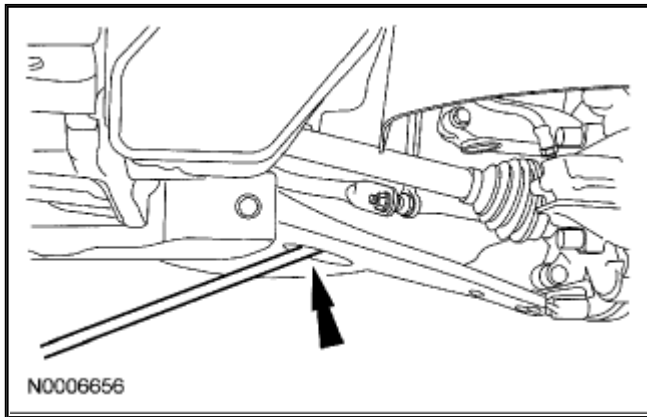
Removal

CAUTION: [Suspension](#) fasteners are critical parts because they affect performance of vital components and systems and their failure can result in major service expense. A new part with the same part number must be installed if installation is necessary. Do not use a new part of lesser quality or substitute design. Torque values must be used as specified during reassembly to make sure of correct retention of these parts.

1. With the vehicle in NEUTRAL, position it on a hoist. For additional information, refer to Maintenance/Service and Repair.
2. **CAUTION:** Do not use a prying device or separator fork between the [ball joint](#) and the wheel knuckle. Damage to the ball joint or ball joint boot can result. Only use the pry bar by inserting it into the lower control arm body opening. **CAUTION:** Do not damage [suspension](#) components when using the pry bar to separate the lower arm from the wheel knuckle. Remove and discard the [ball joint](#) nut and bolt, then insert a pry bar in the lower

arm body opening and separate the lower arm from the wheel knuckle.

- Remove the [ball joint](#) heat shield.

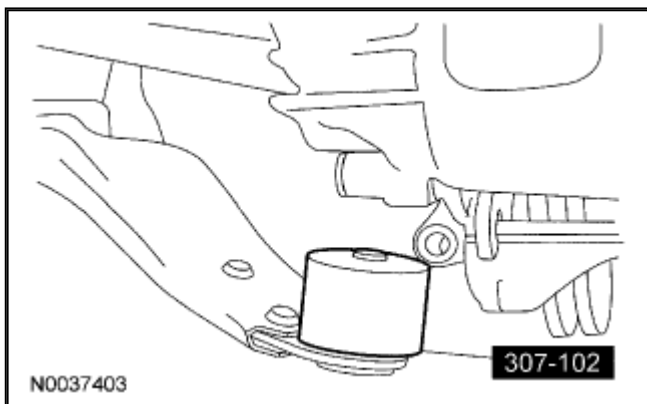


Zoom

Sized for Print

- After separating the lower control arm from the wheel knuckle, immediately install the special tool over the ball stud before releasing the lower control arm and knuckle into rest positions.

- Leave the special tool in place during service and only remove prior to installation.



Zoom

Sized for Print

- Remove the lower arm bushing bracket nuts, bolts and the bracket.

- Discard the nuts and bolts.

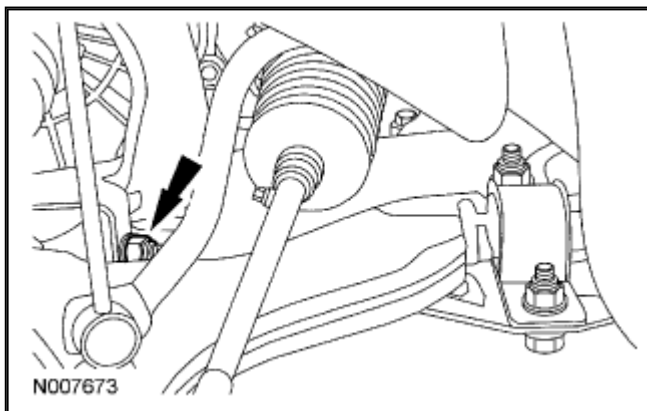
- Remove and discard the lower arm forward nut and bolt and remove the lower arm.

Installation

1. **CAUTION:** Install the fasteners in their original orientation. Install the lower arm bushing clamp bolts with their heads facing down. **NOTE:** Do not tighten the nuts and bolts at this time. Position the lower arm and install the forward nut and bolt and the 2 bracket nuts and bolts.
2. **CAUTION: Make sure the [ball joint](#) heat shield is installed to prevent damage to the ball joint.** Remove the special tool, position the heat shield on the wheel knuckle, insert the [ball joint](#) stud into the wheel knuckle and install the ball joint bolt and nut.

 | Tighten to **63 Nm (46 ft. lbs.)** .

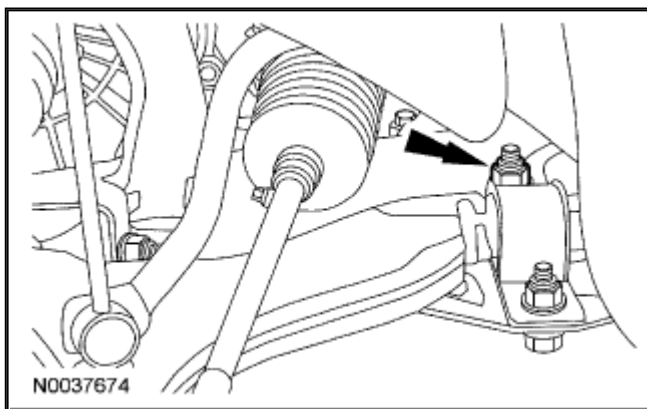
3. **CAUTION:** Tighten the lower arm forward nut and bolt with the [suspension](#) at curb height. Tighten the lower arm forward bolt to **215 Nm (159 ft. lbs.)** .



Zoom

Sized for Print

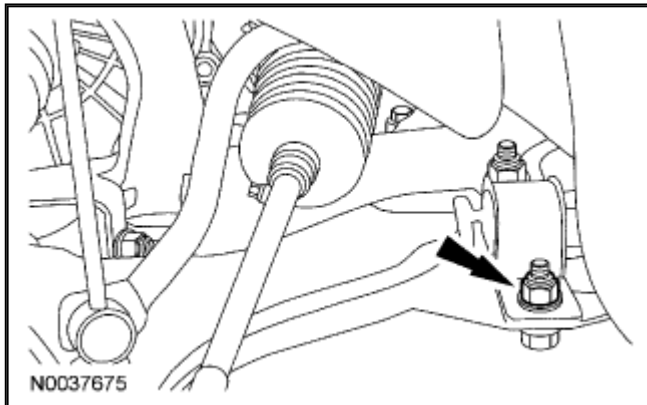
4. **CAUTION:** Tighten the lower arm inboard bracket nut and bolt with the [suspension](#) at curb height. Tighten the lower arm inboard bracket nut to **160 Nm (118 ft. lbs.)** .



Zoom

Sized for Print

5. **CAUTION:** Tighten the lower arm outboard bracket nut and bolt with the [suspension](#) at curb height. Tighten the lower arm outboard bracket nut to **103 Nm (76 ft. lbs.)** .

[Zoom](#)[Sized for Print](#)

6. Check and, if necessary, align the front end. For additional information, refer to [Suspension System - General Information](#).